

MONTHLY MEMBERSHIP PROGRESS REPORT

LOCATION INDIA

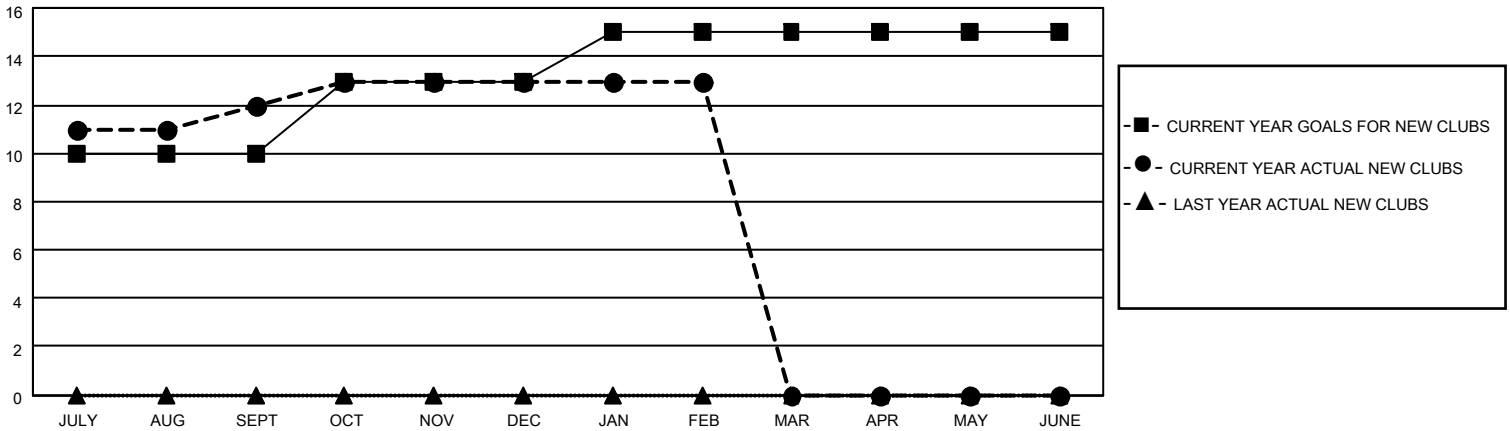
District 322 F

Results as of: 2/28/2023

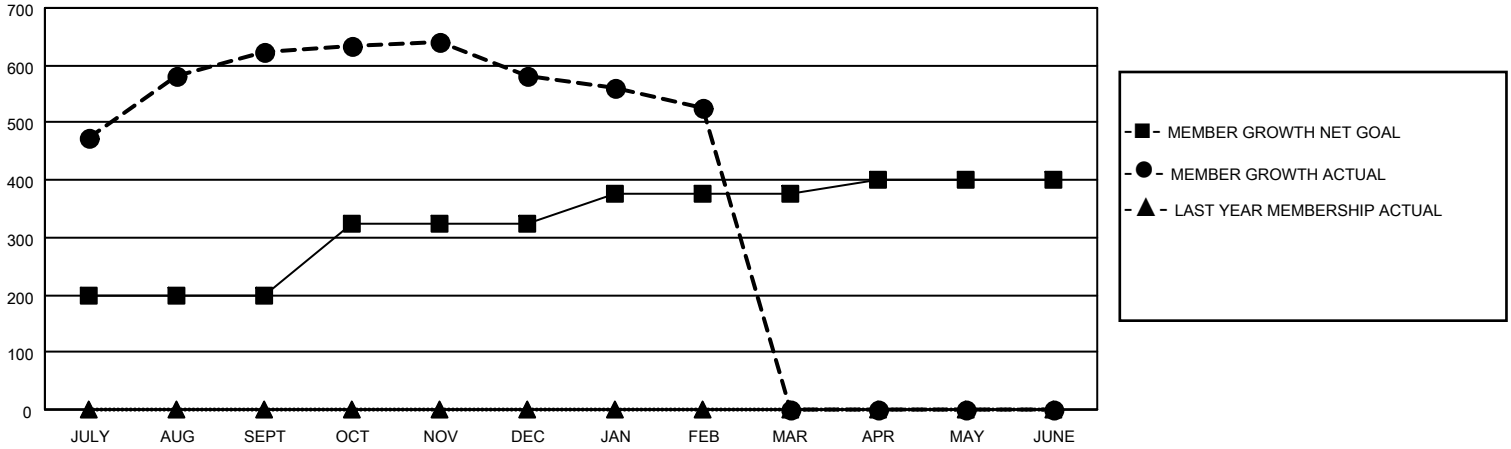
Clubs			
RESULTS FOR 2022-2023			
QUARTER	NEW CLUB GOAL	NEW CLUBS	DROPPED CLUBS
JULY/AUG/SEPT	10	12	0
OCT/NOV/DEC	3	1	3
JAN/FEB/MAR	2	0	2
APR/MAY/JUNE	0	0	0

Members			
RESULTS FOR 2022-2023			
QUARTER	MEMBER GROWTH NET GOAL	MEMBER GROWTH ACTUAL	DROPPED MEMBERS ACTUAL (including transfers)
JULY/AUG/SEPT	200	672	45
OCT/NOV/DEC	125	71	108
JAN/FEB/MAR	50	35	89
APR/MAY/JUNE	25	0	0

GOALS AND ACTUAL NEW CLUBS CUMULATIVE



GOALS AND ACTUAL MEMBERS CUMULATIVE



DROPPED CLUBS: 5

79 CLUBS OF 113 ADDED 1 OR MORE NEW MEMBERS

GENDER DISTRIBUTION

MALE	2,653 (69.20%)
FEMALE	1,181 (30.80%)
NON BINARY	0 (0.00%)
PREFER NOT TO ANSWER	0 (0.00%)

DROPPED MEMBERS

[CLICK HERE FOR CUMULATIVE MEMBERSHIP DATA](#)

DECEASED	4
CLUB CANCELLED	96
OTHER	142
TOTAL	242

TOTAL FAMILY UNIT MEMBERS 1,825

FAMILY MEMBERS PAYING HALF DUES 1,199